

*Research article***EXPRESSION OF E2 (gp 55) GLYCOPROTEIN OF CLASSICAL SWINE FEVER VIRUS IN LYMPHOID TISSUE AND BRAIN OF EXPERIMENTALLY INFECTED PIGLETS WITH DIFFERENT IMMUNOLOGICAL STATUS**

POLAČEK Vladimir^{1*}, PRODANOV-RADULOVIĆ Jasna¹, DOŠEN Radoslav¹, PETROVIĆ Tamaš¹, BECSKEI Zsolt², ALEKSIĆ-KOVAČEVIĆ Sanja³

¹Scientific Veterinary Institute „Novi Sad”, Novi Sad, Serbia, ²Department for Animal Breeding, Faculty of Veterinary Medicine, Belgrade, Serbia, ³Department of Pathology, Faculty of Veterinary Medicine, Belgrade, Serbia,

(Received 26 April; Accepted 29 May 2014)

Classical swine fever (CSF) is a highly contagious viral disease of domestic swine and wild boars. The aim of the study was to examine samples of lymphoid tissues and brain for the presence of Classical Swine Fever Virus (CSFV) antigen in piglets that originate from vaccinated and unvaccinated sows, in order to compare the intensity of pathological lesions in conditions of different immunological status. A total of 20 crossbreed piglets of both sexes, aged 45 days were divided in three groups (G1, G2 and G3). Piglets of G1 originated from sows vaccinated with a live vaccine containing attenuated C strain CSFV. Piglets of G2 originated from unvaccinated sows. Two piglets of G3 originated from vaccinated and two piglets from unvaccinated sows and they served as the control group. All the piglets from G1 and G2 were intramuscularly inoculated with 2×10^5 TCID₅₀ of CSFV, Baker strain and they died by the 22nd day post inoculation. Immunohistochemistry was applied for immunolabeling E2 (gp55) glycoprotein of CSFV in the tonsils, mandibular lymph nodes, ileocecal valve and brain of all tested piglets. Differences were observed in the severity of lesions in the lymphoid tissue and the brain between G1 and G2 piglets. The present level of colostral antibodies was not able to protect piglets in G1 from the fatal outcome of the disease. Among others, this finding may also have an impact on vaccination policy in the future. Having in mind that vaccination of all domestic pigs with attenuated C-strain vaccine is still a mandatory control measure for CSF in Serbia, soon a non-vaccination policy should be harmonized with EU directives.

Key words: classical swine fever, E2 (gp55), immunohistochemistry

INTRODUCTION

Classical swine fever (CSF) is a highly contagious viral disease of domestic swine and wild boars. The causative agent is the Classic Swine Fever Virus (CSFV)

* Corresponding author: e-mail: vlade@niv.ns.ac.rs

that belongs to the genus *Pestivirus* of the *Flaviviridae* family [1-3]. CSF has severe consequences on animal welfare, livestock production, trade and national economy [4]. During CSFV infection immunosuppression reflected in depletion of lymphocytes in lymphoid organs occurs, while severe lymphopenia is present [5-10]. Lymphocytes, monocytes, immature granulocytes as well as endothelial cells, have been recognized to be infected with CSFV, consequently leading to morphological changes in various tissues [11]. Morphological lesions and lymphocyte depletion in different lymphoid tissues depend on the virulence of CSFV [12]. There are also other viruses in pigs that induce immunosuppression. In pigs suffering from postweaning multisystemic wasting syndrome induced by Porcine Circo type 2 Virus (PCV2), lymphocyte depletion in lymphoid tissues is the most prominent finding [13]. In countries where CSFV has not been eradicated, a vaccination program with an attenuated live vaccine, mostly with C strain is established. In such circumstances colostrum antibodies are expected to protect piglets up to a certain level. Having in mind that the last CSF outbreak in Serbia was in 2010, vaccination of all domestic pigs with C-strain vaccine is still a mandatory control measure [14,15]. The goal of the study was to examine samples of lymphoid tissues and brain for the presence of Classical Swine Fever Virus (CSFV) antigen in piglets that originate from vaccinated and unvaccinated sows, in order to compare the intensity of pathological lesions in conditions of different immunological status. Among others, these results are expected to have impact on non-vaccination policy, which should be harmonized with EU directives in Serbia in the future.

MATERIALS AND METHODS

Animals, Virus and Experimental Design

A total of 20 piglets of both sexes, aged 45 days were included in the study. The piglets (crossbreeds of Landrace and Large White) were divided into three groups. The first group (G1) consisted of 8 piglets originated from sows vaccinated with the live vaccine, containing the attenuated C strain of Classical Swine Fever Virus (CSFV). In the serum of these piglets maternal anti-CSFV antibodies were present before the challenge. The second group (G2) consisted of 8 piglets, serologically negative for anti-CSFV antibodies, originated from unvaccinated sows. The control group (G3) was represented by four piglets, two piglets originated from vaccinated and two from unvaccinated sows. The animals were housed in the Experimental Diagnostic Centre of the Scientific Veterinary Institute "Novi Sad", Novi Sad, Serbia. The study has been conducted in full accordance with the Animal Welfare Act (Serbian Official Gazette, No 41/2009).

Health status of all pigs from G1 and G2 was monitored for 10 days prior to intramuscular inoculation with 2×10^5 TCID₅₀ of CSFV, Baker strain. The control group piglets (G3) were intramuscularly inoculated with 1 ml of phosphate buffered saline (PBS), pH 7.2. After virus inoculation clinical signs and rectal temperature were

monitored daily. All experimentally infected piglets of G1 and G2 died by the 22nd day after inoculation. Euthanasia of piglets of the G3-control group was performed on the 22nd day after PBS inoculation, using intravenous injection of 0.5 ml/kg T61 (embutramide 200 mg/ml; mebezonium iodide 50 mg/ml; tetracaine hydrochloride 5 mg/ml, Intervet, International) and proper premedication with 80 mg/kg azaperone (Stresnil, Janssen).

Blood collection and specific antibody detection in the serum

Blood samples were taken from the jugular vein from all piglets of G1, G2 and G3 in order to detect specific maternal antibodies for CSFV and Bovine Viral Diarrhoea Virus (BVDV). After centrifugation of blood samples at 1000 rpm for 10 minutes, serum samples were tested for specific anti-CSFV antibodies with the IDEXX[®] *Classical Swine Fever Virus Antibody Test Kit* according to the manufacturer's instructions. Detection of specific anti-BVDV antibodies in the sera was performed by virus neutralization (VN) test with NADL strain, according to the procedure described in the *Manual of Diagnostic Tests and Vaccines for Terrestrial Animals, Office International Des Epizooties (2012)*.

Molecular detection of CSFV and PCV2

Molecular detection of CSFV and PCV2 was carried out on lymphoid tissue (tonsils, mandibular lymph nodes and ileocecal valves) of each piglet in G1, G2 and G3. Viral RNA of CSFV was extracted from the tissues using Trizol reagent (GIBCO BRL) according to manufacturer's instructions. Briefly, three volumes of Trizol reagent were added to 250 µl of sample material (supernatant from 10% tissue homogenate in PBS). The extraction was performed sequentially with chloroform and isopropanol and RNA was precipitated with 80% ethanol prior to resuspension in DEPC treated water. The "one-tube" or "one-step RT-PCR" assay was performed using reagents supplied in a commercial "Access RT-PCR system" (Promega, USA). RT-PCR amplification was performed using E2 gene specific primers: gp55-U: 5'-ATA TAT GCT CAAGGGCGA GT-3' (sense, position in genome of the Alfort strain is 3378-3397); gp55-L: 5'-ACA GCA GTAGTATCC ATT TCTTTA-3' (antisense, position in the genome of the Alfort strain is 3685-3662). RNA sample (6 µl) was added to the reaction mixtures (44µl) containing AMV/*Tfl* 1 x reaction buffer, dNTP mix (10 mM), 25 pmol of sense and antisense primer, 1 mM of MgSO₄, 5 U of AMV RT and 5 U of *Tfl*/DNA polymerase. The RT-PCR cycling conditions were as follows: 45 min at 48 °C for RT, 94 °C for 2 min for AMV RT inactivation and RNA/cDNA/primer denaturation, 40 cycles of 30 s at 94 °C, 1 min at 60 °C and 2 min at 68 °C, and a final extension step at 68 °C for 7 min. The amplified products were analyzed by electrophoresis on a 1.5% agarose gel.

In order to determine whether the piglets were infected with porcine circovirus type 2 (PCV2), PCR assay was carried out on the lymphoid tissue samples (tonsils, mandibular lymph nodes and ileocecal valves). Extraction of total DNA from the lymphoid

tissue samples was done with “QIAamp[®]DNA Mini Kit”, (Qiagen, Hilden, Germany) following manufacturer’s instructions. For the amplification of 501 bp fragment of ORF2 regions of the viral DNA, previously described PCV2 specific oligonucleotide primers PCV2-2A: 5'-CACCTTCGGATATACTGTCAA-3' (nucleotide position 1582–1562) and PCV2-2B: 5'-TACATGGTTACACGGATATTGTA-3' (nucleotide position 1082–1104) were used. PCR method was carried out according to the manufacturer’s protocol modified by Becskei et al. [13].

Histopathology and immunohistochemistry

Tissue samples were taken from the mandibular lymph nodes, tonsils, ileocecal valves and brain of all piglets in G1, G2 and G3 immediately after death. The lymphoid tissue specimens were fixed 48h in 10% buffered formalin, pH 7.4. The brain was cut at the coronal sections, on brain slabs 2-4 mm according to standardized procedure, starting at the frontal lobe and ending in the *medulla oblongata*. After this procedure the brain slabs were fixed 96 h in 10% buffered formalin, pH 7.4. The samples were dehydrated through a graded series of alcohol and xylen and embedded in paraffin by routine technique for light microscopy. Paraffin embedded sections (4-5 µm) were stained with haematoxylin and eosin (HE). The immunohistochemical method was applied in order to detect the CSFV glycoprotein E2 (gp55), using the monoclonal antibody WH303 (Veterinary Laboratories Agency, Addlestone, UK). Antigen retrieval method was employed according to the manufacturer procedure and modified by Polacek et al. [5]. Endogenous peroxidase activity was blocked in 0.5% hydrogen peroxide in methanol (15 minutes) and preincubation was carried out with 50% normal goat serum (30 minutes). Primary antibody WH303 diluted 1:50 in PBS containing 10% normal goat serum was incubated for 18 hours at 4°C as described by Carasco et al. [16,17]. Biotinylated goat anti-mouse immunoglobulin (DAKO, ChemMate, Denmark) was applied as the secondary antibody 20 minutes at 20°C. Visualisation was achieved with streptavidin-peroxidase complex (DAKO, Denmark) 20 minutes at 20°C using 3-3' diaminobenzidine-tetrahydrochloride (DAKO, Liquid DAB, Denmark) and 3-amino-9 etilcarbasole (DAKO, ChemMate, AEC, Denmark). Counterstaining was performed with Mayer’s haematoxylin.

RESULTS

Results of antibody detection in the serum

In all the tested serum samples of piglets from G1, G2 and G3, the virus neutralization test showed no detection of specific antibodies to Bovine Viral Diarrhoea Virus (BVDV). The results of blocking ELISA test for the detection of anti-CSFV antibodies proved the presence of antibodies in serum samples of piglets in G1 before the challenge. However, there was no presence of anti-CSFV antibodies in the serum of piglets in G2 and G3.

Results of molecular testing

The results of RT-PCR test confirm that in the examined tissue samples in all the tested piglets of G1 and G2 groups RNA of CSFV was detected. In the samples of piglets in control group (G3) no RNA of CSFV was detected. Using qualitative PCR reaction the absence of PCV2 infection was proven for each piglet in G1, G2 and G3.

Clinical signs

All piglets inoculated with CSFV showed clinical signs of CSF. Rectal temperature was between 40.6 °C and 41.4 °C, 48h after inoculation. Reduced appetite and apathy were noticed 72h post inoculation. Conjunctivitis was recorded from the 5th day post inoculation (dpi). Yellowish gray diarrhoea was noticed from 7-8 dpi. Neurological signs (convulsions, staggering gait, and posterior paresis) were recorded from 7-14 dpi. Hyperaemia, cyanosis and skin haemorrhages were also noticed from 9 dpi. All experimentally infected piglets in both groups died by the 22nd dpi. The mortality pattern is shown in Table 1. The G1 piglets with maternal immunity had reduced clinical evidence of the disease and clinical signs of lower intensity, appeared a few days later then in non-immune G2 animals. None of the piglets in G3 showed clinical signs of CSFV.

Table 1. Mortality pattern of pigs

Group/dpi	7.	11.	14.	16.	17.	19.	21.	22.
G1	1	1	2	1	1	0	1	1
G2	1	1	1	2	0	1	0	2

Gross lesions

Tonsils. The most common finding in G1 was mild hyperaemia of tonsils and petechial haemorrhages in the epiglottis (Figure 1A). Hemorrhages and necrotic changes on tonsils of various degree were the prominent findings. Necrotic changes ranged from discrete in G1 (Figure 1B), to massive with necrotic deposits which completely covered the surface of the tonsils in G2 (Figure 1C). **The mandibular lymph nodes** were swollen and enlarged with a characteristic marbled appearance in cross-section (Figure 1B) and with subcapsular to diffuse haemorrhages. Mandibular lymph nodes of G1 and G2 piglets were enlarged, hyperaemic, with haemorrhages of different intensity. There were subcapsular haemorrhages on cross sections of the mandibular lymph nodes (Figure 1A), while in most cases the middle part of mandibular lymph nodes resembled fat tissue, sometimes with petechial haemorrhages (Figure 1C). **Ileocecal valves** and surrounding tissue in all G1 and G2 animals were covered with grey-yellow to green-yellow deposits, which were difficult to remove. The crypts were filled with massive necrotic detritus in G2 (Figure 3A). Dilatation of crypts filled with necrotic detritus is a common macroscopic finding on the cross section of *ileocecal* tonsil in both

G1 and G2 groups (Figure 3B, 3C). **Brain.** Gross lesions in the brain of piglets of G1 and G2 were in conjunction with the level of recorded neurological clinical signs. Dilatation of blood vessels in leptomeninges, haemorrhages in cerebellum, brainstem and mid-brain were found in piglets of both G1 and G2 group (Figure 4A, 4B, 4C). There were no gross lesions in the tonsils, mandibular lymph nodes, ileocecal valves and brain in the piglets of G3.

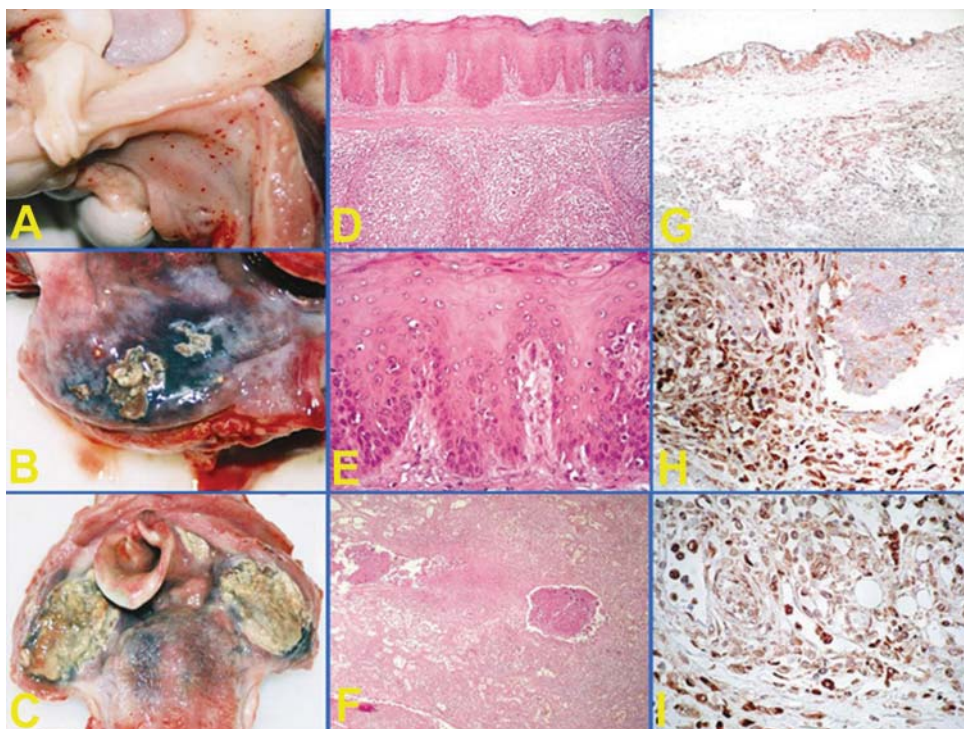


Figure 1. Tonsils in experimentally infected pigs

A-macroscopic lesions in tonsils and epiglottis, G1, 7. dpi; **B**-macroscopic lesions in tonsils, G2, 17. dpi; **C**-massive necrotic deposits on tonsils, G1, 14. dpi; **D**-Tonsil, proliferation of epithelium, G2, 14. dpi, HE, x200; **E**-Tonsil, proliferation of epithelium G2, 14. dpi, HE, x400; **F**-Tonsil, necrotic lymph follicles, G2, 16. dpi, HE, x100; **G**-Tonsil, G1, 14. dpi, expression of E2 protein of the CSFV, WH303, LSAB, x200; **H**-Tonsil, G2, 22. dpi, expression of E2 protein of the CSFV, WH303, LSAB, x200; **I**-Tonsil, G2, 22. dpi, expression of E2 protein of the CSFV, WH303, LSAB, x400.

Histopathology

Tonsils. Proliferation of the epithelial cells of tonsil crypts (Figure 1E), necrosis in the epithelium, as well as enlarged and partially necrotic lymph follicles (Figure 1D, 1F) were a very frequent finding in all infected pigs. All described changes have been accompanied by haemorrhages. **Mandibular lymph nodes.** Diffuse haemorrhages

are a very frequent finding in mandibular lymph nodes of G1 and G2 pigs that were infected with CSFV (Figure 2D). Sinuses were remarkably dilated, often with numerous erythrocytes and macrophages. Lymphocyte depletion, as well as blood vessels degeneration and thrombosis, were found in a few samples of G2 pigs (Figure 2E, 2F). **Ileocecal valve.** Cystic gland lumen was filled with necrotic detritus (Figure 3D). In pigs of groups G1 and G2, the walls of blood vessels were changed by hyaline degeneration and a fine fibrin net was found in the lumen of some blood vessels (Figure 3E, 3F). **Brain.** Microscopic changes in the samples of brain tissue had a characteristic of non-purulent *meningo-encephalitis*. A swelling with intense dilatation of blood vessels, haemorrhages and perivascular mononuclear cell infiltration was found in the leptomeninges of cerebellum in G2 piglets (Figure 4D, 4E). Endothelial cells swelling and haemorrhages in the *brain parenchyma* were present, as well (Figure 4F). Degenerative changes were also spotted on some neurons. (Figure 4E).

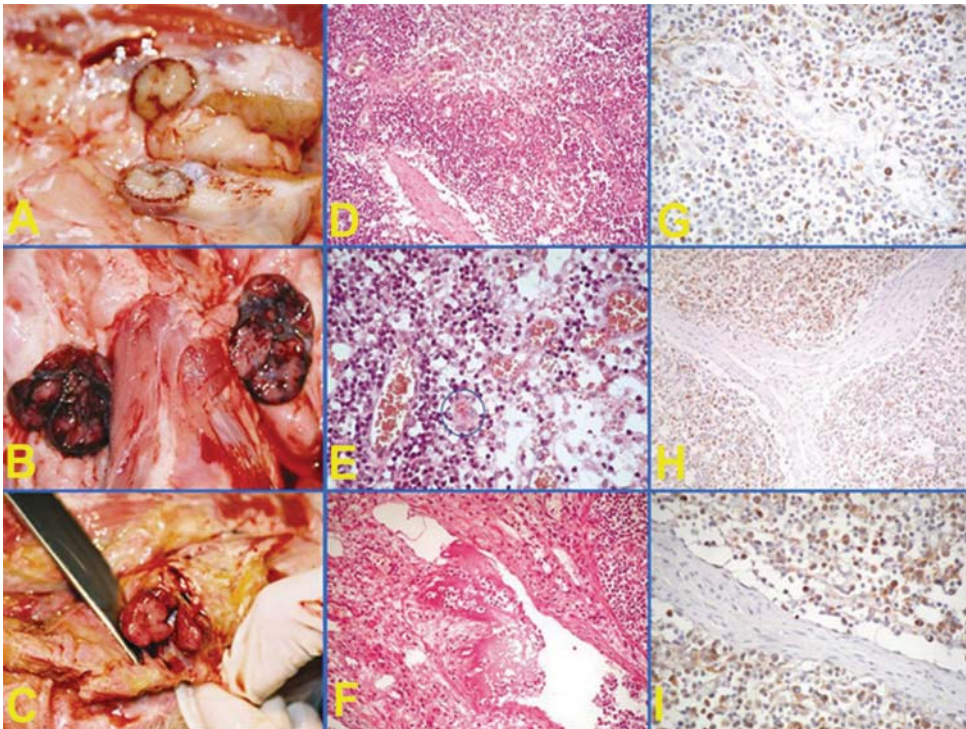


Figure 2. Mandibular lymph nodes in experimentally infected pigs

A-Mandibular lymph node, cross-section, G2, 16. dpi; **B-**Mandibular lymph node, cross section, G2, 22. dpi; **C-** Mandibular lymph node, cross-section, G1, 11. dpi; **D-**Mandibular lymph node, G1, 7. dpi, HE, x100; **E-**Mandibular lymph node, G1, 7. dpi, HE, x200; **F-**Mandibular lymph node, G1, 14. dpi, HE, x200; **G-**Mandibular lymph node, G2, 16. dpi; expression of E2 protein of the CSFV, WH303, LSAB, x200; **H-**Mandibular lymph node, G1, 11. dpi; expression of E2 protein of the CSFV, WH303, LSAB, x400; **I-**Mandibular lymph node, G1, 11. dpi; expression of E2 protein of the CSFV, WH303, LSAB, x400.

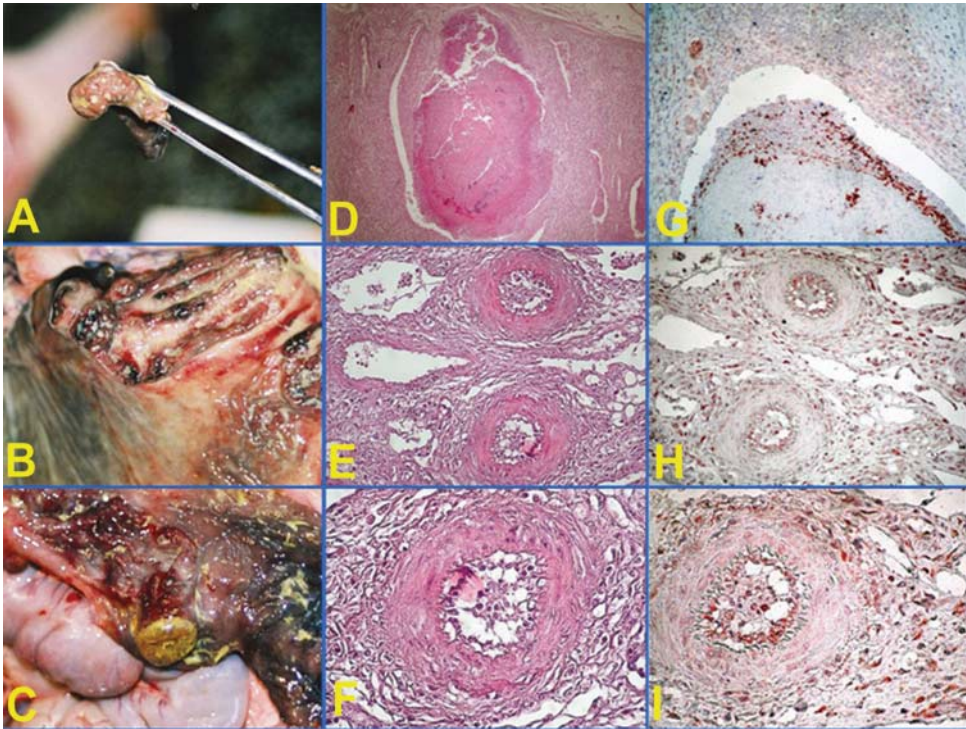


Figure 3. Ileocecal valves in experimentally infected pigs

A-Ileocecal valve, G1, 14. dpi; **B**-Ileocecal valve, G2, 22. dpi; **C**-Ileocecal valve, G1, 16. dpi; **D**-Ileocecal valve, G1, 11. dpi, HE, x40; **E**-Ileocecal valve, G1, 22. dpi, HE, x200; **F**-Ileocecal valve, G1, 22. dpi, HE, x400; **G**-Ileocecal valve, G2, 14. dpi, expression of E2 protein of the CSFV, WH303, LSAB, x200; **H**-Ileocecal valve, G2, 22. dpi, expression of E2 protein of the CSFV, WH303, LSAB, x200. **I**-Ileocecal valve, G2, 22. dpi, expression of E2 protein of the CSFV, WH303, LSAB, x400.

There was no evidence of differences in microscopical findings in the lymphoid tissues as well as in the brain, regarding different time of piglets death, within both G1 and G2. There were no detected histopathological lesions in the tonsils, mandibular lymph nodes, ileocecal valves and brain of the piglets of G3.

Detection of E2 (gp55) antigen of CSFV

Tonsils. A positive reaction on the presence of E2 protein (gp55) of CSFV was found in tonsils of G1 and G2 piglets in the tonsil epithelium and tonsil crypts epithelium (Figure 1G). The expression of E2 glycoprotein was determined in inter-follicular and follicular lymphocytes and macrophages. Very intensive positive reaction on CSFV was present in endothelial cells of blood vessels as well as in the intravascular macrophages in G2 (Figure 1H, 1I) and in the cellular infiltrate surrounding blood vessels. **Mandibular lymph nodes.** The cells positive to E2 protein (gp55) were distributed diffusely in the parenchyma of mandibular lymph nodes. The largest number of positive cells

surrounded sinuses (Figure 2G) and were also present in their lumina (Figure 2H). Macrophages, lymphocytes and plasma cells, as well as endothelial blood vessel cells and intravascular macrophages expressed E2 glycoprotein of CSFV (Figure 2I) in both groups G1 and G2. **Ileocecal valve.** An intense expression of E2 glycoprotein of CSFV was found in the ileocecal valves of all infected pigs of G1 and G2. Epithelial cells of *ileocecal valve* crypts and cells in the necrotic detritus in the very lumen of these crypts revealed a positive reaction (Figure 3G). Positively stained intravascular macrophages and other cells trapped within the fibrin net were found in the lumen of blood vessels (3H, 3I). **Brain.** The most intense expression of E2 glycoprotein of CSFV was detected in the leptomeninges. Endothelial cells of leptomeningeal blood vessels, as well as intravascular macrophages also expressed a positive reaction (Figure 4G, 4I). In one case of G2, expression of E2 in the parenchyma of the cerebellum was recorded and it is obvious that the positive cells have morphological characteristics of macrophages (Figure 4H). There was no detection of E2 protein (gp55) of CSFV in the tonsils, mandibular lymph nodes, ileocecal valves and brain of the piglets of G3.

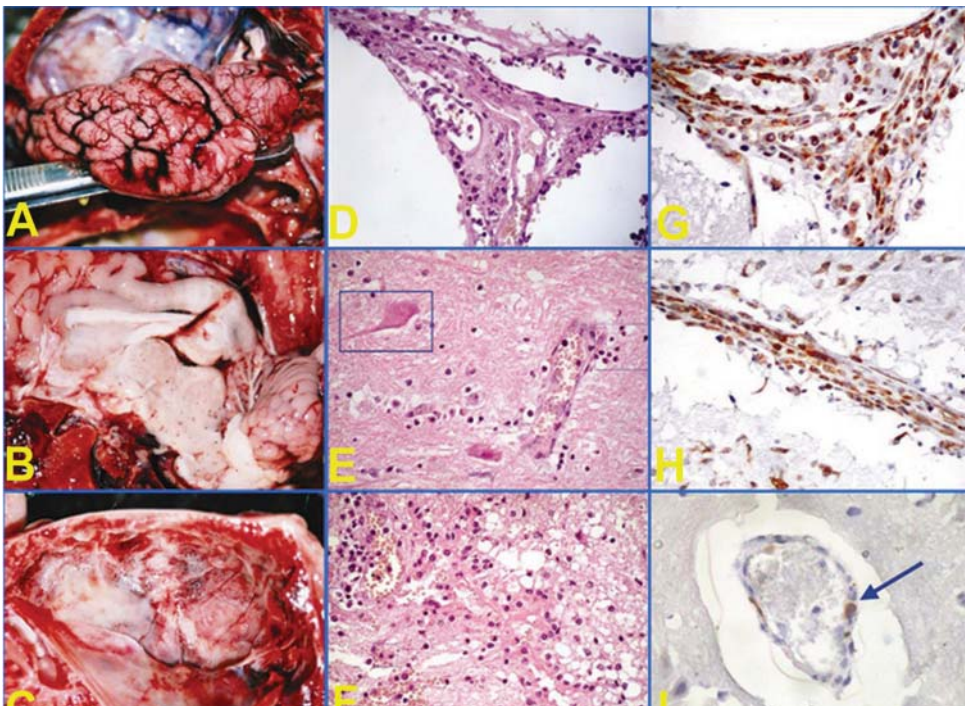


Figure 4. Brain in experimentally infected pigs

A-Brain, G1, 11. dpi; **B**-Brain, G2, 22. dpi; **C**-Brain, G2, 16. dpi; **D**-Leptomeninges, G1, 11. dpi, HE, x400; **E**-Brain, G2, 19. dpi, HE, x200; **F**-Brain, G2, 19. dpi, HE, x200; **G**-Brain, G1, 11. dpi, expression of E2 protein of the CSFV, WH303, LSAB, x400; **H**-Brain, G1, 11. dpi, expression of E2 protein of the CSFV, WH303, LSAB, x200; **I**-Brain, G2, 14. dpi, expression of E2 protein of the CSFV, WH303, LSAB, x400.

DISCUSSION

Classical swine fever is a highly contagious disease of swine which occurs around the world [1,3]. In the current study, we found differences in the severity of lesions in the lymphoid tissue and brain between the piglets that originate from vaccinated and unvaccinated sows. Despite the differences in lesion severity, the level of colostral antibodies was able to reduce the clinical signs, but not to protect the piglets from the fatal outcome of the disease. Among others, this finding may also have impact on vaccination policy in the future. Having all the aforementioned in mind and the fact that the last CSF outbreak in Serbia was in 2010 [17], and vaccination of all domestic pigs with attenuated C-strain is still a mandatory control measure for CSF in Serbia [18], soon non-vaccination policy should be harmonized with EU directives. In the early beginning of the non-vaccination campaign new cases of CSF are expected to occur.

In the present study, all piglets with (G1) or without (G2) maternal immunity, intramuscularly inoculated with 2×10^5 TCDI₅₀ of CSFV, Baker strain, succumbed to the disease with characteristic clinical and morphological signs of CSF. However, we found that the microscopic examination was the most useful method to investigate the differences and morphological nature of the disease between these two groups. Previously it was demonstrated that the monocytes and immature granulocytes, as well as vascular endothelial cells are the main cell populations infected with the virus, consequently leading to the damage of various tissues [11,16]. Considering the role of monocyte/macrophage cells lineage, secretion of cytokines was already described in details in CSFV infected pigs [10]. The presence of viral antigens is necessary to induce TNF-expression, the cytokine involved in the inflammatory response and its role is connected with the induction of apoptosis. Recently, the expression of CSFV antigens was demonstrated also in dendritic cells [17]. However, the intensity of the both, tissue lesions in the brain as well as lymphocyte depletion in lymphoid organs, depend on the virulence of the virus [12].

Results of IHC and RT-PCR revealed the presence of CSFV in lymphoid and brain tissue. Furthermore, immunohistochemistry confirmed not only the presence, but also the distribution of CSFV in the tested tissue samples: tonsils, mandibular lymph nodes, ileocecal valves and brain. The most prominent microscopic lesion that we found in lymphoid tissue was lymphocyte depletion, which was described in studies of other authors, as well [12,19, 20]. In an earlier study we also described the changes that were developed in mandibular lymph nodes in the spot of massive depletion of CD3 and CD79 lymphocytes during experimental infection of pigs with CSFV [5]. Since in our experiments maternally immune piglets had clinical evidence of the disease a few days later than non-immune animals, we assume that passively transferred antibodies neutralized the virus to a certain level but it was not able to prevent the fatal outcome of the disease. In addition to lymphocyte depletion, circumscript necrosis "buttons" in the ileocecal valve was determined by histological examinations 10-12 days after

challenge. The results of this study demonstrate also detection of E2 (gp55) antigen in the brain, indicating that CSFV is localized in endothelial cells of blood vessels, as well as in mononuclear infiltrate in the leptomeninges of the cerebellum. These results were obtained in our study mostly in piglets of G2, without maternal anti-CSFV antibodies. However, our results also confirmed the lack of expression of E2 (gp55) of CSFV in neurons. At the same time we found a low intensity of expression of E2 (gp55) in brain tissue samples from the piglets of G1 originated from vaccinated sows. In this group, the E2 (gp55) virus antigen was found in the brain only in some endothelial cells in small blood vessels.

One study reported the localization of E2 (gp55) antigen in the inflammatory perivascular infiltrate in the cerebellum and in choroid plexus epithelium. However, similar to our results, the authors have not found expression of E2 (gp55) antigen in neurons [19].

Although ELISA can only detect the presence of antibodies it was obvious that the amount of colostral anti-CSFV antibodies in the blood of infected piglets, originating from vaccinated sows, was below the protection level [18]. Various influences which could impact colostral immunity were already described [21,22,23]. The current study showed that the IHC technique is a useful tool for detection, localisation and distribution of CSFV in formalin fixed, paraffin embedded tissue samples. We found differences in the severity of histological lesions, in the lymphoid tissue and the brain between the piglets with and without maternal immunity. Despite the differences in lesion severity, protection of the piglets with the present level of colostral antibodies was not enough to prevent a fatal outcome of the disease. This observation was not unexpected since it was demonstrated that this level of colostral CSFV antibodies was only sufficient to reduce the clinical signs of CSF in the first four weeks of life, in pigs originating from vaccinated sows [18].

Acknowledgement

This study was supported by Project III 46002 and TR 31071 of Ministry of Education, Science and Technological Development, Republic of Serbia.

REFERENCES

1. Van Oirschot JT: Classical Swine Fever (Hog Cholera). In: *Diseases of Swine*, 8th Edition, Ed. Straw BE, Blackwell Science, 1999.
2. Van Oirschot JT: Vaccinology of swine fever: from lab to field. *Vet Microbiol* 2003, 96: 367-384.
3. Paton DJ, Greiser-Wilke I: Classical swine fever-an update. *Res Vet Sci* 2003, 75:169-178.
4. Moennig V: Introduction to classical swine fever: virus, disease and control policy. *Vet Microbiol* 2000, 73: 93-102.

5. Polaček V, Prodanov J, Lazić S, Petrović T, Rašić Z, Aleksić-Kovačević S: Immunohistochemical detection of B and T lymphocytes in mandibular lymph nodes of experimentally infected piglets with classical swine fever virus. *Acta Vet-Beograd* 2007, 57(2-3):199-208.
6. Šuša M, Konig A, Saalmuller A, Reddehase MJ, Thiel HJ: Pathogenesis of Classical swine fever: B-lymphocyte deficiency caused by hog cholera virus. *J Viro* 1992, 66: 1171-1175.
7. Sato M, Mikami O, Kobayashi M, Nakajima Y: Apoptosis in the lymphatic organs of piglets inoculated with classical swine fever virus. *Vet Microbiol* 2000, 75: 1-9.
8. Summerfield A, Zingle K, Inumaru S, McCullough MC: Induction of apoptosis in bone marrow neutrophil-lineage cells, by classical swine fever virus. *J Gen Virol* 2001, 82: 1309-1318.
9. Sánchez-Cordón PJ, Romanini S, Salguero FJ, Ruiz-Villamor E, Carrasco L, Gómez-Villamandos JC: Histopathological, immunohistochemical and ultrastructural study of intestine in pigs inoculated with Classical swine fever virus. *Vet Pathol* 2003, 40: 254-262.
10. Sánchez-Cordón PJ, Núñez A, Salguero FJ, Carrasco L, Gómez-Villamandos JC: Evolution of T Lymphocytes and Cytokine Expression in Classical Swine Fever (CSF) Virus Infection. *J Comp Pathol* 2005, 123: 249-260.
11. Summerfield A, Knotig SM, McCullough MC: Lymphocyte apoptosis during Classical Swine Fever. Implication of activation-induced cell death. *J Viro* 1998, 72 (2): 1853-1861.
12. Narita M, Kawashima K, Kimura K, Mikami O, Shibahara T, Yamada S, Sakoda Y: Comparative immunohistopathology in pigs infected with highly virulent or less virulent strains of hog cholera virus. *Vet Pathol* 2000, 37: 402-408.
13. Becskei Zs., Aleksić-Kovačević S, Rusvai M, Balka GY, Jakab CS, Petrović T, Knežević M: Distribution of porcine circovirus 2 Cap antigen in the lymphoid tissue of pigs affected by Postweaning Multisystemic Wasting Syndrome. *Acta Vet Hung* 2010, 58 (4): 483-498.
14. Milićević V, Radojičić S, Valčić AM, Ivočić V, Maksimović-Zorić J, Radosavljević V: Detection and genotyping of classical swine fever virus isolates in Serbia. *Acta Vet-Beograd* 2013, 63(2-3):191-200.
15. Nedić D, Tešić M, Baltić M, Plavšić B, Tajdić Nada, Mirilović M, Rajković M: Management and control program for suppression and eradication of Classical swine fever in Serbia. *Acta Vet-Beograd* 2011, 61:(2-3), 295-307.
16. Carrasco L, Ruiz-Villamor E, Gómez-Villamandos JC, Bautista MJ, Núñez A, Quezada M, Sierra MA: Atypical cilia in the bronchiolar epithelium of pigs experimentally infected with hog cholera virus. *J Comp Path* 2001, 124: 29-35.
17. Carrasco CJ, Rigden RC, Vincent IE, Balmelli C, Ceppi M, O. Bauhofer O, Tache V, Hjertner B, McNeilly F, Van Gennip HG, McCullough KC, Summerfield A: Interraction of classical swine fever virus with dendritic cells. *J Gen Virol* 2004, 85:1633-1641.
18. Prodanov J, Došen R, Pušić I, Bugarski D, Valčić M: Passive immunity evaluation in piglets originating from sows vaccinated with China strain of classical swine fever virus. *Acta Vet-Beograd* 2007, 57(5-6): 413-427.
19. Martín de las Mulas, J, Ruiz-Villamor E, Donoso S, Quezada M, Lecocq C, Sierra, MA: Immunohistochemical detection of hog cholera viral glycoprotein 55 in paraffin-embedded tissues. *J Vet Diagn Investig* 1997, 9:10-16.
20. Narita M, Kimura K, Tanimura N, Ozaki H: Immunohistochemical Detection of Hog Cholera Virus Antigen in Paraffin Wax-embedded Tissues from Naturally Infected Pigs. *J Comp Pathol* 1999, 121: 283-286.

21. Wuren M, Yougang Z., Huangrong L, Banchao S., Jiefeng L, Jin Y, Changrong W, Xiaolong X, Yuying H, Xiaoxi L, Fenghua L, Jianqin X: Effect of transport stress on peripheral blood lymphocyte subsets and Th cytokines in pigs. *Acta Vet-Beograd* 2012, 63(2-3):177-190.
22. Šamanc H, Sladojević Ž, Vujanac I, Prodanović R, Kirovski M, Dudovski P, Kirovski D: Relationship Between Growth Of Nursing Pigs And Composition Of Sow Colostrum And Milk From Anterior And Posterior Mammary Glands. *Acta Vet-Beograd* 2012,63(5-6): 537-548.
23. Kovačocová K, Reichel P, Seidel H, Breneselová M, Kósa B: Influence of beta-glucan and vaccination against *Lawsonia intracellularis* on selected immune indices in weaned piglets. *Acta Vet-Beograd* 2014, 64(1): 105-114.

EKSPRESIJA E2 (gp 55) ANTIGENA VIRUSA KLASIČNE KUGE SVINJA U LIMFATIČNOM TKIVU I MOZGU EKSPERIMENTALNO INFICIRANE PRASADI SA RAZLIČITIM IMUNOLOŠKIM STATUSOM

POLAČEK Vladimir, PRODANOV-RADULOVIĆ Jasna, DOŠEN Radoslav, PETROVIĆ Tamaš, BECSKEI Zsolt, ALEKSIĆ-KOVAČEVIĆ Sanja

Klasična kuga svinja (KKS) predstavlja zarazno oboljenje domaćih i divljih svinja. Cilj ovih ispitivanja bio je utvrđivanje prisustva virusa KKS u uzorcima limfatičnog tkiva i mozga prasadi, poreklom od vakcinisanih i nevakcinisanih krmača, i praćenje intenziteta patoloških promena pri različitom imunološkom statusu. Ispitivanja su izvršena na 20 prasadi oba pola, starosti 45 dana, koja su podeljena u tri grupe (G1, G2 i G3). Prasad G1 grupe poticala su od krmača koje su vakcinisane atenuiranom vakcinom C-soja virusa KKS. Prasad G2 i G3 grupe poticala su od nevakcinisanih krmača. Prasad G3 grupe predstavljala su kontrolnu grupu. Virus KKS inokulisan je intramuskularno prasadima G1 i G2 grupe ("Baker" soj, 2×10^5 TCDI/₅₀). Sva prasadi su uginula najdalje do 22. dana od momenta inokulacije. Imunohistohemijska metoda je korišćena za dokazivanje E2 (gp55) antigena u uzorcima tonzila, mandibularnih limfnih čvorova, ileocekalnih tonzila i mozga, kod svih prasadi u ogledu. Utvrđena je razlika u intenzitetu patoloških promena u limfatičnom tkivu i mozgu prasadi G1 i G2 grupe. Kolostralna antitela protiv virusa KKS nisu uspela da zaštite prasadi od fatalnog ishoda bolesti. Između ostalog, ovi rezultati mogu imati značaj za program vakcinacije u budućnosti. Naime, vakcinacija svinja protiv KKS, atenuiranim K sojem virusa i dalje je obavezna zakonska mera u Srbiji. Uskoro će se program prestanka vakcinacije uskladiti sa EU direktivama.